

香港人口的內部遷移及遷居特徵

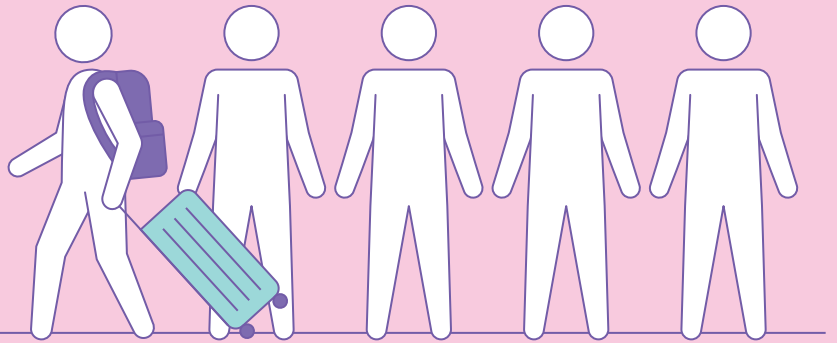
Internal Migration and Home Moving Characteristics of Hong Kong Population

重點 Highlights

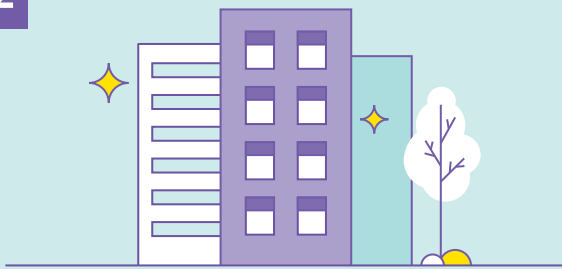
01

約五分之一的 5 歲及以上人口
曾於過去 5 年遷居

Around one in five persons
aged 5 and over had changed their
residence in the past 5 years

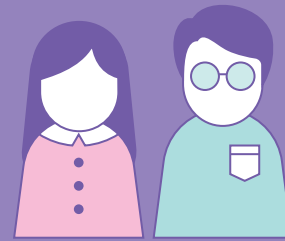


02



約 4 成半 曾作內部遷移人士遷居至新市鎮
Around 45% of the population who
had internally migrated moved to New Towns

03



25 至 44 歲的人士較多作內部遷移
Persons aged 25-44 were more likely to
have migrated internally

04



曾作內部遷移人士的
教育程度一般較高

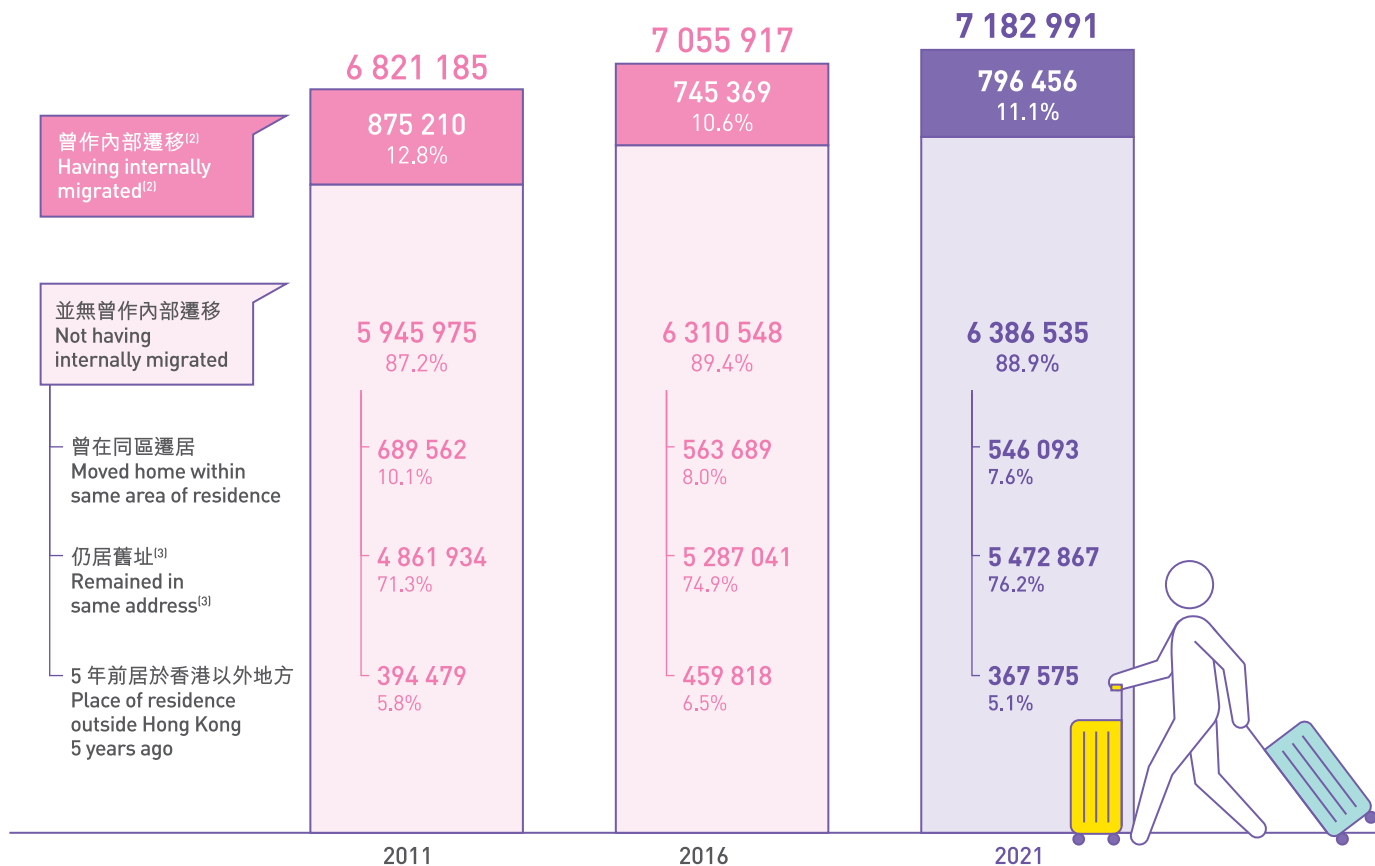
Persons who had internally migrated
generally had higher educational attainment

05



高收入住戶有較大的機會作內部遷移
Higher income households were more likely
to migrate internally

01 2011 年、2016 年及 2021 年按曾否作內部遷移劃分的 5 歲及以上人口⁽¹⁾ Population⁽¹⁾ aged 5 and over by whether having internally migrated, 2011, 2016 and 2021



註釋: (1) 數字不包括現居於船艇上的人士。

(2) 曾作內部遷移的人士指該人士的現住地區與其 5 年前的居住地區不同。在分析內部遷移時，居住地區的轉變是指 (a) 一區議會分區與另一區議會分區之間的遷移，或 (b) 在新界同一區議會分區內，一新市鎮與另一新市鎮之間的遷移，或一新市鎮與該區其他地方之間的遷移。

(3) 數字包括現住於 5 年前住址，但在 5 年期間曾遷往其他地方，並稍後遷回的人士。

Notes: (1) Figures exclude persons currently living on board vessels.

(2) Persons having internally migrated were those whose area of current residence was different from the area of residence 5 years ago. In defining internal migration, a change in the area of residence refers to a move (a) from a District Council district to another District Council district; or (b) within a District Council district in the New Territories, from a New Town to another New Town, or from a New Town to other areas in the district or vice versa.

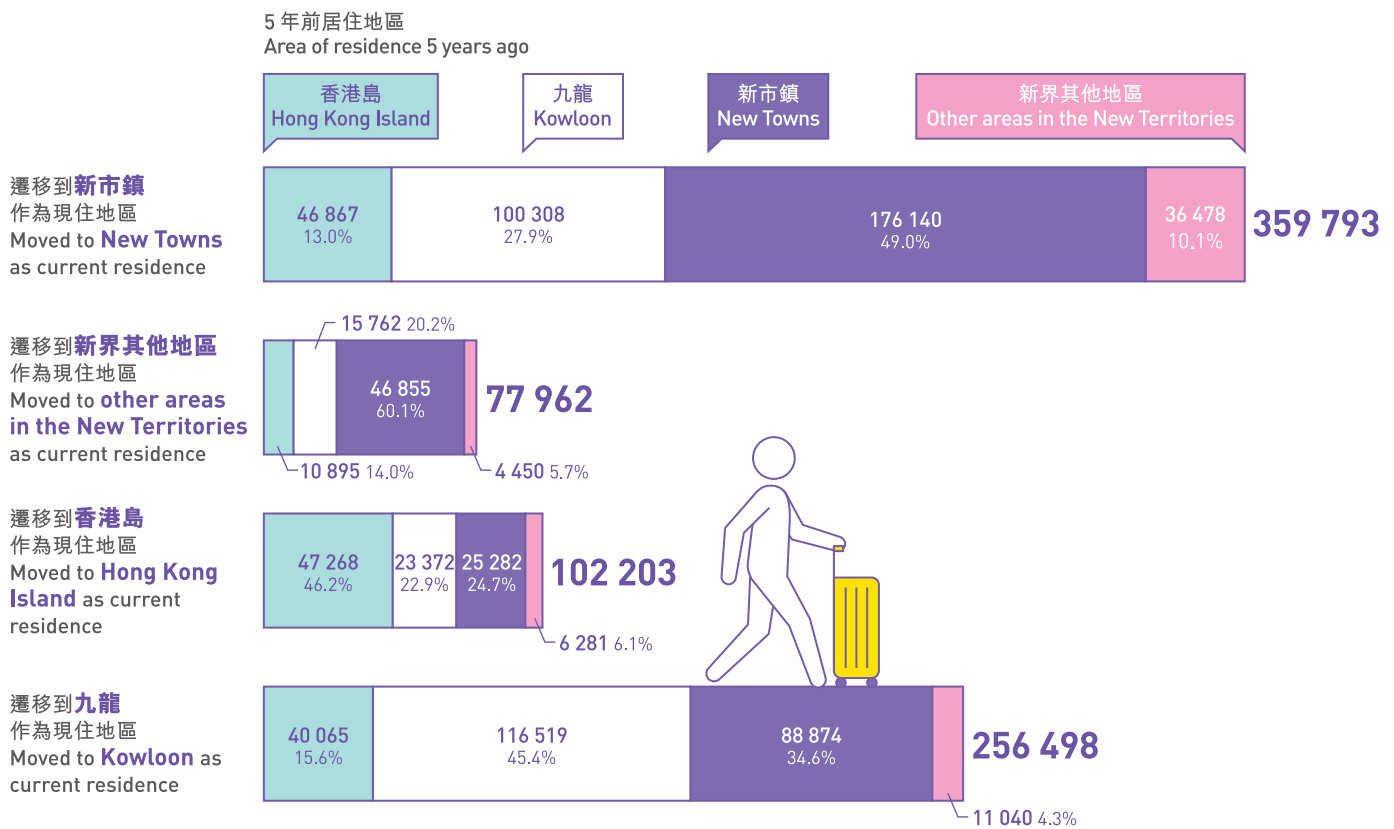
(3) Figures include persons who currently lived in the same address as 5 years ago but had moved elsewhere during the 5 years and then moved back.

約五分之一的 5 歲及以上人口曾於過去 5 年遷居 Around one in five persons aged 5 and over had changed their residence in the past 5 years

1.1 在 2021 年，有 134 萬 5 歲及以上人士曾於過去 5 年遷居，佔全港 5 歲及以上人口的 18.7%。這些曾遷居的人士，包括 80 萬名曾作內部遷移及 55 萬名曾同區遷居的人士。

In 2021, 1.34 million persons aged 5 and over had changed their residence in the past 5 years, accounting for 18.7% of Hong Kong population aged 5 and over. Persons who had changed their residence included 0.80 million who had internally migrated and 0.55 million who had moved their home within the same district.

02 2021 年按 5 年前居住地區及現住地區劃分的曾作內部遷移的 5 歲及以上人口⁽¹⁾ Population⁽¹⁾ aged 5 and over having internally migrated by area of residence 5 years ago and area of current residence, 2021



約 4 成半曾作內部遷移人士遷居至新市鎮

Around 45% of the population who had internally migrated moved to New Towns

2.1 在 80 萬名於 2016 年至 2021 年期間曾作內部遷移的人士中，約 4 成半（36 萬人）遷往新市鎮。他們當中近一半是來自其他新市鎮，另有約 3 成是來自九龍。

Of the 0.80 million persons who had internally migrated between 2016 and 2021, around 45% (0.36 million persons) moved to New Towns. Around half of them were from other New Towns and around 30% were from Kowloon.

2.2 此外，遷往九龍的人士當中，超過 4 成是來自九龍的其他地區，另有約三分之一是從新市鎮遷往九龍的。

Besides, over 40% persons who moved to Kowloon were from other areas in Kowloon and around one-third were from New Towns.

03 2021 年按年齡組別劃分的曾作內部遷移的 5 歲及以上人口⁽¹⁾ Population⁽¹⁾ aged 5 and over having internally migrated by age group, 2021



註釋: (1) 數字不包括現居於船艇上的人士。

(2) 括號內的數字顯示在相應年齡組別人口中所佔的百分比。

Note: (1) Figures exclude persons currently living on board vessels.

(2) Figures in brackets represent the percentages in respect of the population in respective age groups.

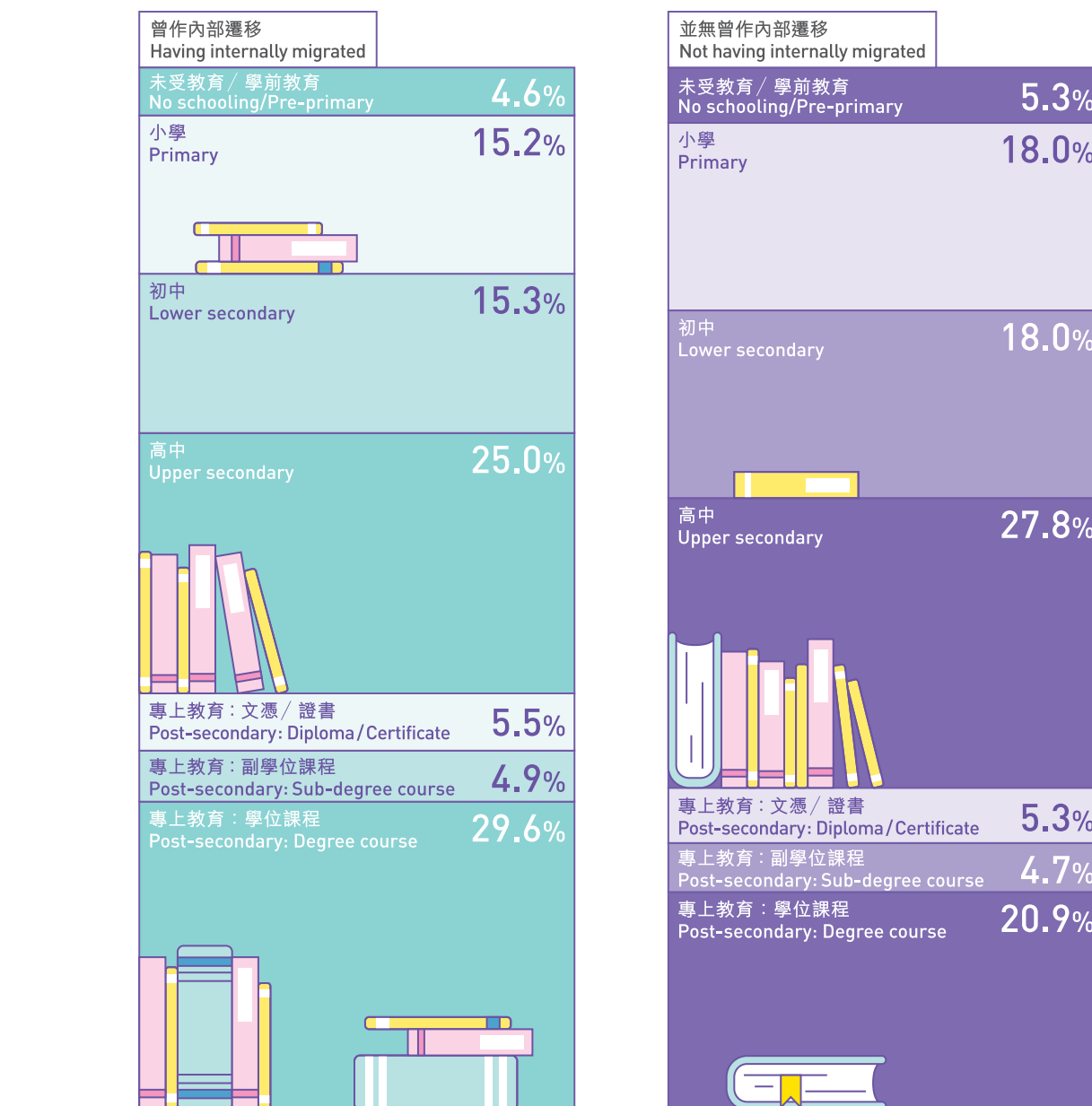
25 至 44 歲的人士較多作內部遷移 Persons aged 25-44 were more likely to have migrated internally

3.1 從曾作內部遷移人士的年齡結構來看，年齡介乎 25 至 44 歲的人士（15.8%）較多作內部遷移。這可能與他們有較大機會結婚、生育及組織自己的家庭有關。

The age structure of persons who had internally migrated suggested that persons aged 25-44 (15.8%) were more likely to migrate internally. This may be related to their higher probability of marriage, child birth and forming their own families.

04 2021 年按曾否作內部遷移及教育程度（最高就讀程度）劃分的 5 歲及以上人口分布⁽¹⁾

Distribution of population⁽¹⁾ aged 5 and over by whether having internally migrated and educational attainment (highest level attended), 2021



註釋：(1) 數字不包括現居於船艇上的人士。

Note: (1) Figures exclude persons currently living on board vessels.

曾作內部遷移人士的教育程度一般較高

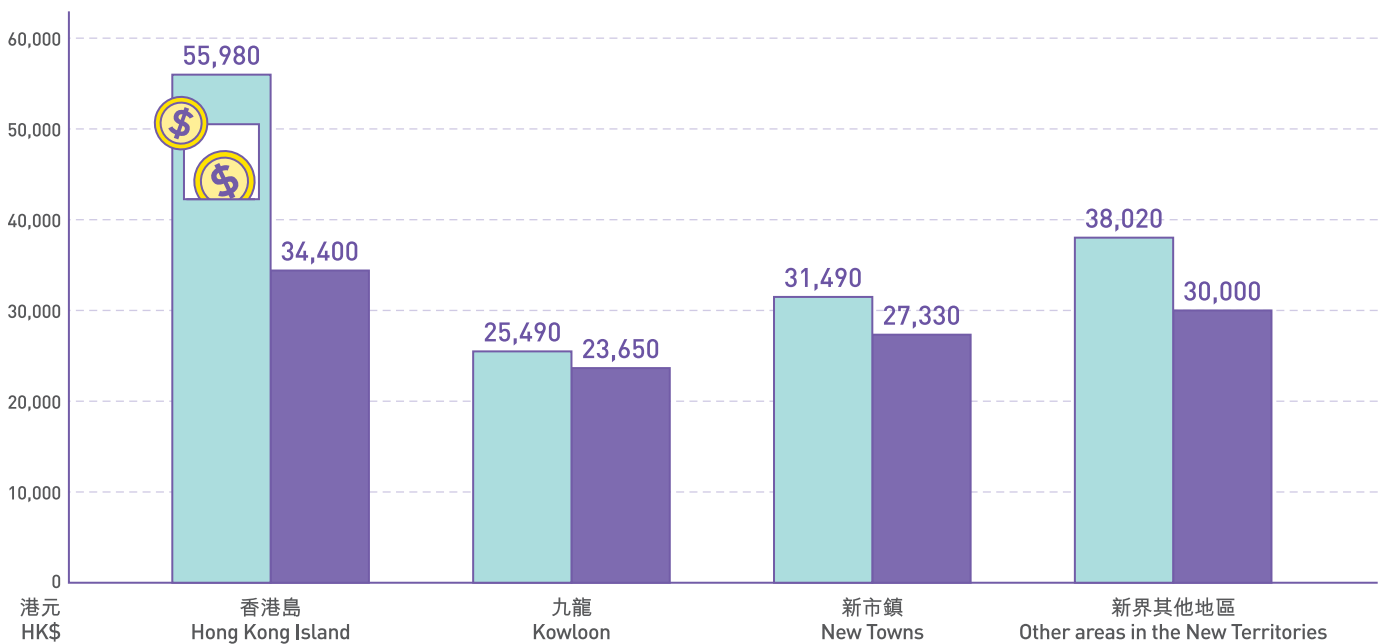
Persons who had internally migrated generally had higher educational attainment

4.1 曾作內部遷移人士的教育程度一般較未曾作內部遷移人士為高。曾作內部遷移人士中，29.6% 具專上教育的學位程度，但未曾作內部遷移人士中則只有 20.9%。

Persons who had internally migrated in general had higher educational attainment than those not. Degrees in post-secondary education had been attended by 29.6% of persons who had internally migrated as compared with only 20.9% of those not.

05 2021 年按現住地區及曾否作內部遷移劃分的家庭住戶⁽¹⁾每月收入中位數 Median monthly household income of domestic households⁽¹⁾ by area of current residence and whether having internally migrated, 2021

曾作內部遷移⁽²⁾
Having internally migrated⁽²⁾
並無曾作內部遷移⁽³⁾
Not having internally migrated⁽³⁾



註釋：(1) 數字不包括現居於船艇上的家庭住戶。

(2) 數字指家庭住戶內所有戶主均在過去 5 年內作內部遷移。

(3) 數字指家庭住戶內其中至少一位戶主在過去 5 年內並無曾作內部遷移。

Notes: (1) Figures exclude domestic households currently living on board vessels.

(2) Figures refer to domestic households in which all of the household head(s) had internally migrated within the past 5 years.

(3) Figures refer to domestic households in which at least one of the household head(s) had not internally migrated within the past 5 years.

高收入住戶有較大的機會作內部遷移 Higher income households were more likely to migrate internally

5.1 就住戶月入中位數而言，曾作內部遷移的住戶較未曾者為高。這現象與高收入住戶有較高的負擔能力作內部遷移有關。

Households which had internally migrated had a higher median monthly household income than those not. This phenomenon was likely related to the greater affordability of higher income households to migrate internally.

5.2 遷往香港島的住戶的每月收入中位數為 55,980 元，比遷往其他區域的住戶的月入中位數為高。然而須注意的是，就那些沒有曾作內部遷移的住戶而言，香港島住戶的每月收入中位數也較其他區域的住戶為高。

The median monthly household income for households that had internally migrated to Hong Kong Island was \$55,980, higher than those which had internally migrated to other areas. It has nevertheless to be noted that for those households which had not internally migrated, the median monthly household income for those on Hong Kong Island was also higher than households elsewhere.

其他參考資料

- 《2021 年人口普查-主要結果》
- 《2021 年人口普查-簡要報告》

Other references

- 2021 Population Census - Main Results
- 2021 Population Census - Summary Results