

內地來港定居未足七年人士 Persons from the Mainland Having Resided in Hong Kong for Less Than 7 Years (PMRs)

重點 Highlights

01



內地來港定居未足 7 年人士
數目在過去 10 年
下降逾 2 成

The number of PMRs
**dropped by
more than 20%**
over the past 10 years

02



內地來港定居未足 7 年人士
較全港人口年輕，當中
約 **34%** 為 25 至 44 歲女性

PMRs were relatively young as compared to
the whole population, of which
about **34%** were women aged 25-44

03



內地來港定居未足 7 年人士
曾接受專上教育的比例達 **26.6%**

The proportion of PMRs
with post-secondary education
reaching **26.6%**

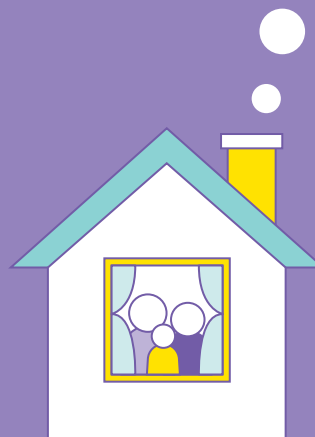
04



內地來港定居未足 7 年人士
主要的職業收入中位數
在 10 年間上升 **8 成**

Median income from main employment of
PMRs rose by **80%** over 10 years

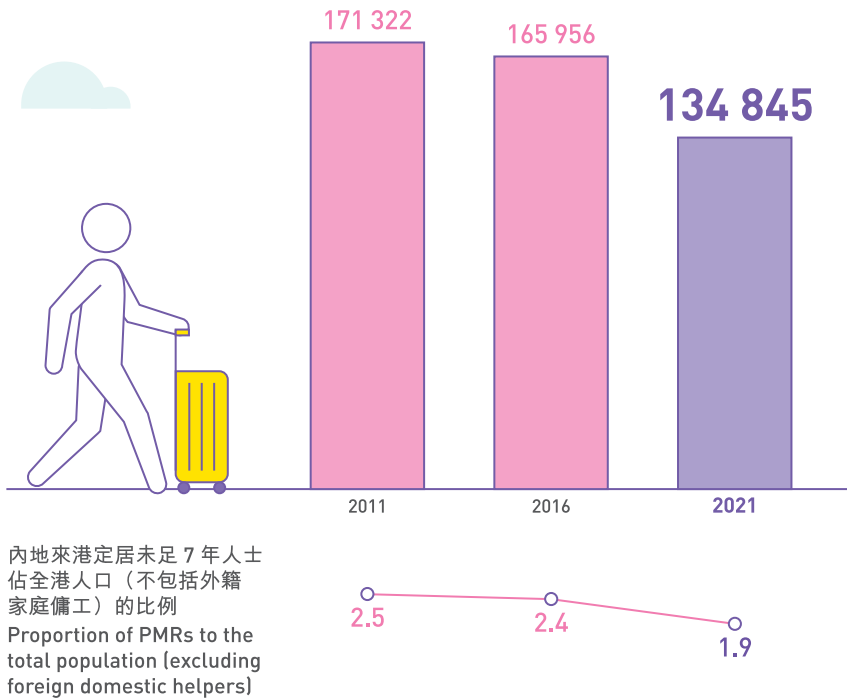
05



有內地來港定居未足 7 年人士
居住的家庭住戶平均人數為 3.4 人

Domestic households with PMRs
had an average size of 3.4 persons

01 2011 年、2016 年及 2021 年內地來港定居未足 7 年人士數目 Number of PMRs, 2011, 2016 and 2021



內地來港定居未足 7 年人士是指該些報稱：

1. 其出生地點為中國內地；
2. 國籍是中國並以香港為其永久居留地；及
3. 居港少於 7 年的人士

PMRs refer to persons who reported that they

1. were born in the mainland of China;
2. were of Chinese nationality with place of domicile in Hong Kong; and
3. had stayed in Hong Kong for less than 7 years.

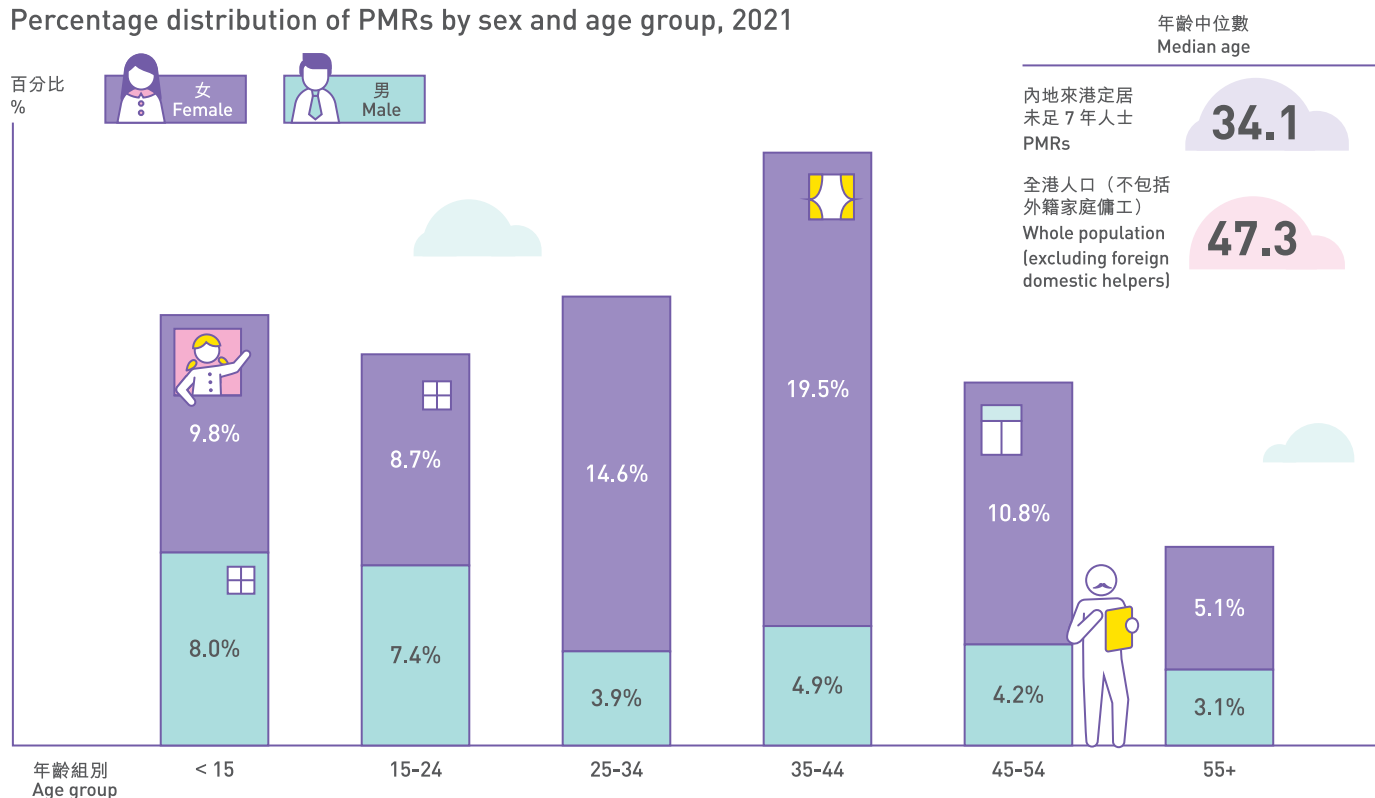
內地來港定居未足 7 年人士數目在過去 10 年下降逾 2 成

The number of PMRs dropped by more than 20% over the past 10 years

- 1.1 在 2021 年，香港有 134 845 名內地來港定居未足 7 年人士，佔全港人口（不包括外籍家庭傭工）約 1.9%。2021 年的人數較 2011 年下降逾 2 成，主要原因是過去 10 年抵港的單程證持有人數目有所減少。

There were 134 845 PMRs in 2021, accounting for around 1.9% of the whole population (excluding foreign domestic helpers). The drop in the number of PMRs in 2021 of more than 20% as compared to 2011 was mainly due to the fact that fewer One-way Permit Holders (OWPHs) had entered Hong Kong over the past 10 years.

02 2021 年按性別及年齡組別劃分的內地來港定居未足 7 年人士的百分比分布 Percentage distribution of PMRs by sex and age group, 2021



內地來港定居未足 7 年人士較全港人口年輕，當中約 34% 為 25 至 44 歲女性
PMRs were relatively young as compared to the whole population, of which about 34% were women aged 25-44

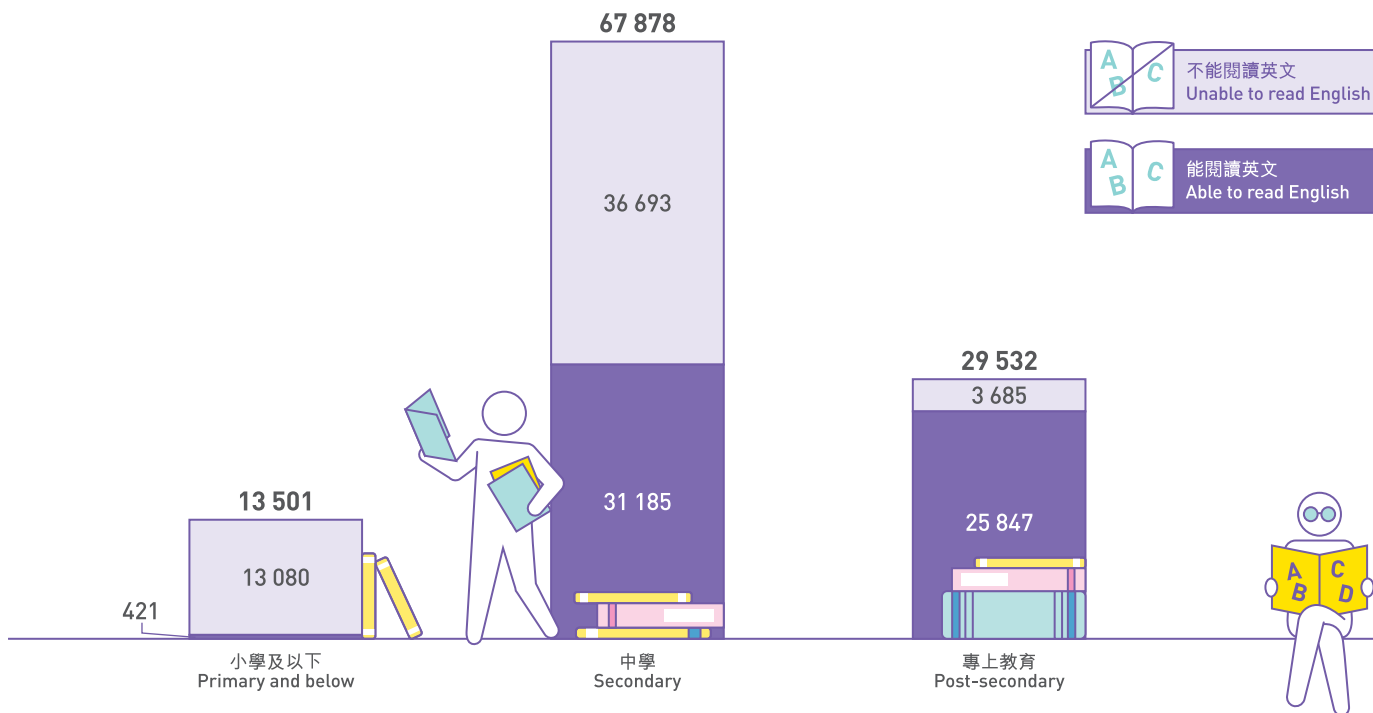
2.1 在內地來港定居未足 7 年人士中，約 34% 為 25 至 44 歲的女性，大部分為來港與丈夫團聚的單程證持有人。

About 34% of PMRs were women aged 25-44 and most of them were OWPHs who came to Hong Kong to join their husbands.

2.2 內地來港定居未足 7 年人士的年齡中位數是 34.1 歲，顯著低於全港人口 (不包括外籍家庭傭工) 的 47.3 歲。

The median age of PMRs was 34.1, notably lower than that at 47.3 for the whole population (excluding foreign domestic helpers).

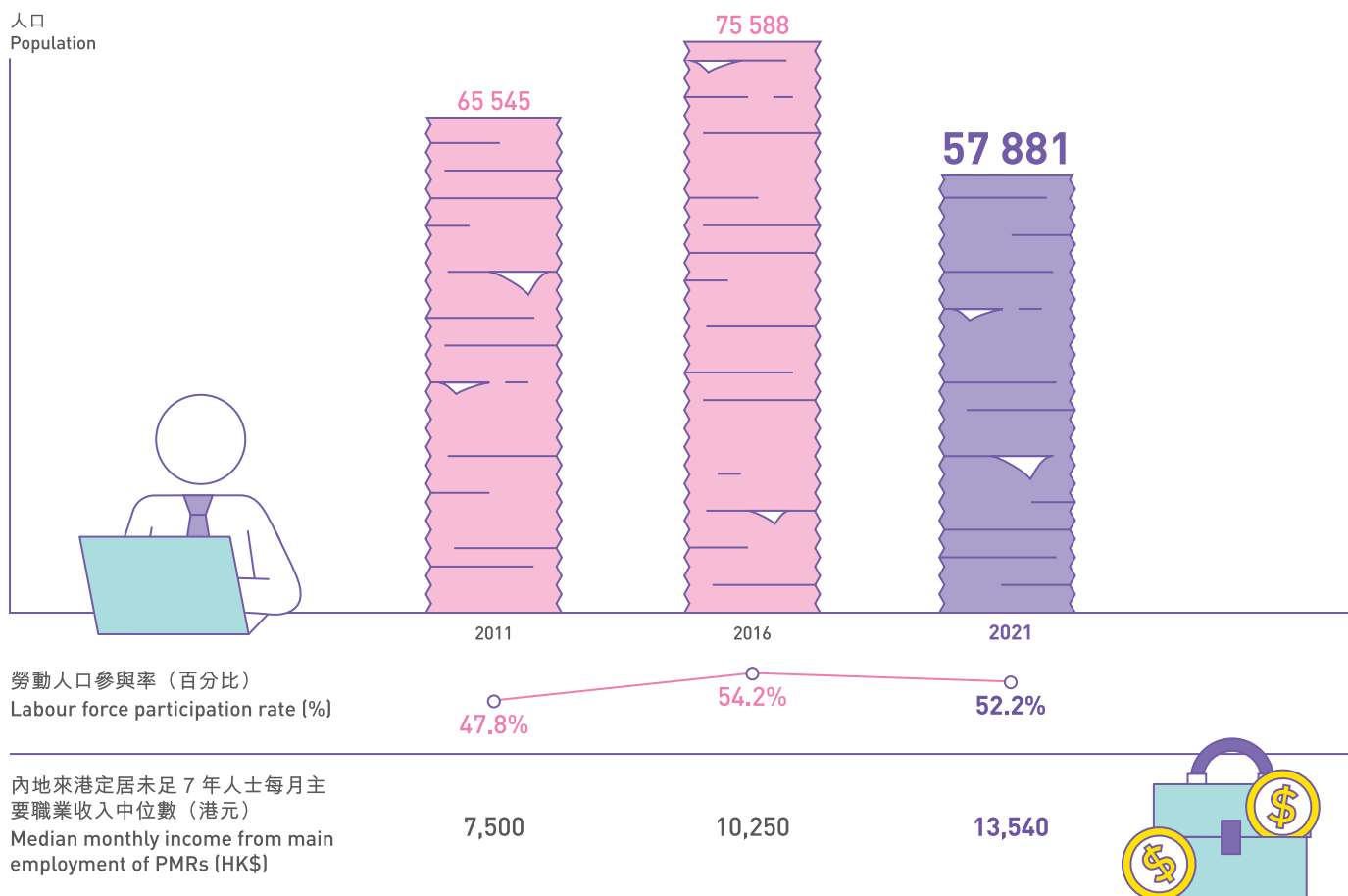
03 2021 年按教育程度（最高就讀程度）及能否閱讀英文劃分的 15 歲及以上內地來港定居未足 7 年人士數目 Number of PMRs aged 15 and over by educational attainment (highest level attended) and whether able to read English, 2021



內地來港定居未足 7 年人士曾接受專上教育的比例達 26.6% The proportion of PMRs with post-secondary education reaching 26.6%

- 3.1 15 歲及以上的內地來港定居未足 7 年人士的教育程度在過去 10 年有所提升，在 2021 年曾接受專上教育的比例達 26.6%。
The educational attainment of PMRs aged 15 and over had shown improvement in the past decade. The proportion of those who had attended post-secondary education reached 26.6% in 2021.
- 3.2 內地來港定居未足 7 年人士讀寫英文的能力隨着教育水平提高而有所提升。近 9 成 15 歲及以上曾接受專上教育的內地來港定居未足 7 年人士能閱讀英文（當中絕大部分能書寫英文）。
The ability of PMRs in reading/writing English improved along with higher educational attainment. Almost 90% of PMRs aged 15 and over who had attended post-secondary education were able to read English (the large majority of whom could write English).

04 2011 年、2016 年及 2021 年在勞動人口中的內地來港定居未足 7 年人士數目 Number of PMRs in the labour force, 2011, 2016 and 2021



內地來港定居未足 7 年人士主要的職業收入中位數在 10 年間上升 8 成 Median income from main employment of PMRs rose by 80% over 10 years

- 4.1 在 2021 年有 57 881 名內地來港定居未足 7 年人士在勞動人口中。內地來港定居未足 7 年人士的勞動人口參與率⁽¹⁾由 2011 年的 47.8% 上升至 2016 年的 54.2%，但後來回落至 2021 年的 52.2%。
- 4.2 隨着內地來港定居未足 7 年工作人士的職業向上流趨勢，其每月主要職業收入中位數上升至 2021 年的 13,540 元。10 年間的累積名義升幅為 80.5%。

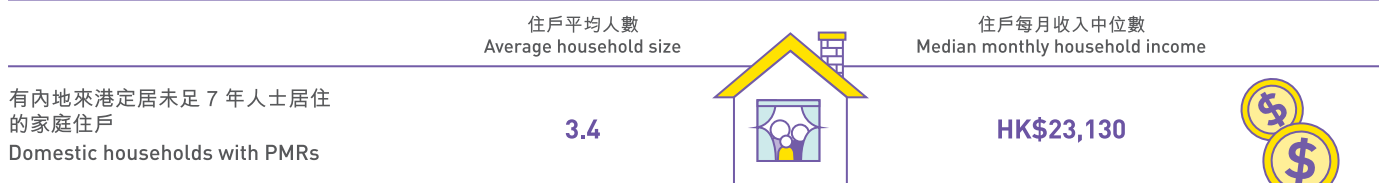
In 2021, there were 57 881 PMRs in the labour force. The labour force participation rate⁽¹⁾ for PMRs increased from 47.8% in 2011 to 54.2% in 2016 but then fell to 52.2% in 2021.

In line with the upward shift in the occupation of working PMRs, their median monthly income from main employment increased to \$13,540 in 2021. This represented a cumulative increase of 80.5% in nominal terms over the past 10 years.

註釋：(1) 「勞動人口參與率」：從事經濟活動的內地來港定居未足 7 年人士佔所有 15 歲及以上的內地來港定居未足 7 年人士的百分比

Note: (1) "Labour force participation rate": the proportion of economically active PMRs to the total number of PMRs aged 15 and over

05 2021 年有內地來港定居未足 7 年人士居住的家庭住戶 Domestic households with PMRs, 2021



有內地來港定居未足 7 年人士居住的家庭住戶平均人數為 3.4 人 Domestic households with PMRs had an average size of 3.4 persons

5.1 2021 年，95 782 個家庭住戶有至少一位成員為內地來港定居未足 7 年人士，佔全港家庭住戶 3.6%。由於很多內地來港定居未足 7 年人士是來港與親屬團聚，並有較大機會與家庭成員同住，這類家庭住戶的平均人數為 3.4 人，高於全港家庭住戶的 2.7 人。

There were 95 782 domestic households with at least one household member being PMRs in 2021, representing 3.6% of all domestic households in Hong Kong. As many PMRs came to Hong Kong to join their next of kin and were more likely to live with their family members, the average size of these households of 3.4 persons was higher than that of 2.7 persons for all domestic households.

5.2 2021 年，這些住戶的每月收入中位數為 23,130 元，較 10 年前上升逾 6 成。

The median monthly income of these households were \$23,130 in 2021, which was over 60% higher than that 10 years earlier.

其他參考資料

1. 《2021 年人口普查-主要結果》
2. 《2021 年人口普查-簡要報告》
3. 《2021 年人口普查-主題性報告：內地來港定居未足七年人士》

Other references

1. 2021 Population Census - Main Results
2. 2021 Population Census - Summary Results
3. 2021 Population Census - Thematic Report: Persons from the Mainland Having Resided in Hong Kong for Less Than 7 Years